

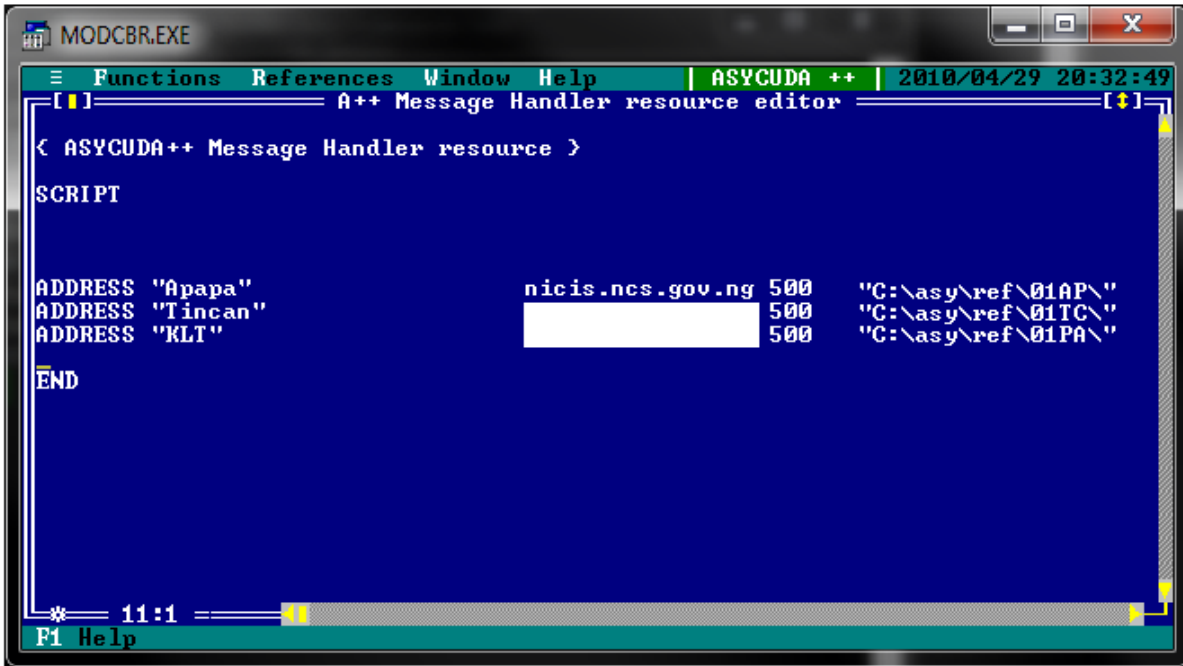
# Configuration modification for Apapa users

The following document is here to explain the procedure to update the configuration settings for Asycuda for **Apapa users only**.

The first step is to launch Asycuda, and from the top left menu (button on the left of the “Function” button), select “**Edit script**” as shown in the next picture (after selecting “Options”, then “Communications”):



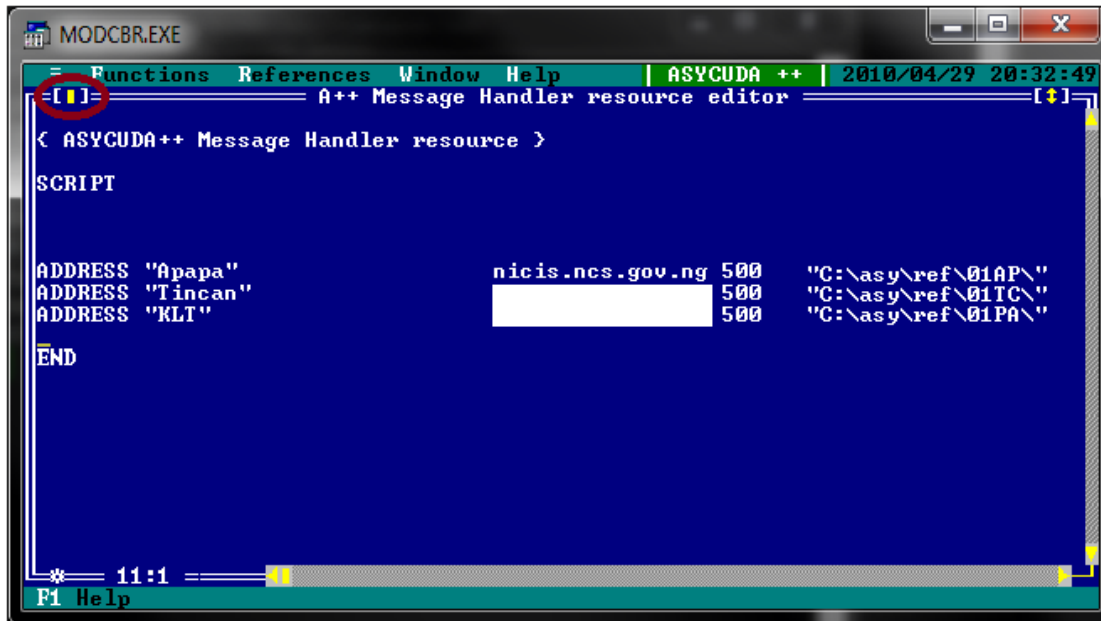
Once you have selected “edit script”, the following windows should open:



This window shows the addresses stored on your system. You have to select the line with “Apapa” and put the following parameters instead of the previous ones as shown in the picture above:

- ADDRESS “Apapa”                      nicis.ncs.gov.ng 500 “C:\asy\ref\01AP”

Then, once it is done, click on the yellow button at the top left of the window (the one circled in red in the next image).



After clicking on this button, a new window will appear, with three options, here please select "Yes" as shown as in the next picture. The configuration have been changed, the system is ready.

